

漳州锦源盛锆业有限公司 / Zhangzhou JinYuanSheng Zr Industry Co.,Ltd.

锆刚玉 锆 40/Fused alumina zirconia, AZ40

锆 40: AZ40 represents a Fused Alumina-Zirconia type of eutectic composition produced by melting alumina and Zirconia at about 2000 °C temperature in an electric arc furnace followed by cooling of the motion product. The very fine and homogenous microstructure of this materials provides high toughness but also excellent self sharpening properties. With 40% zirconia, this product promises lasting durability for coated and bonded abrasives.

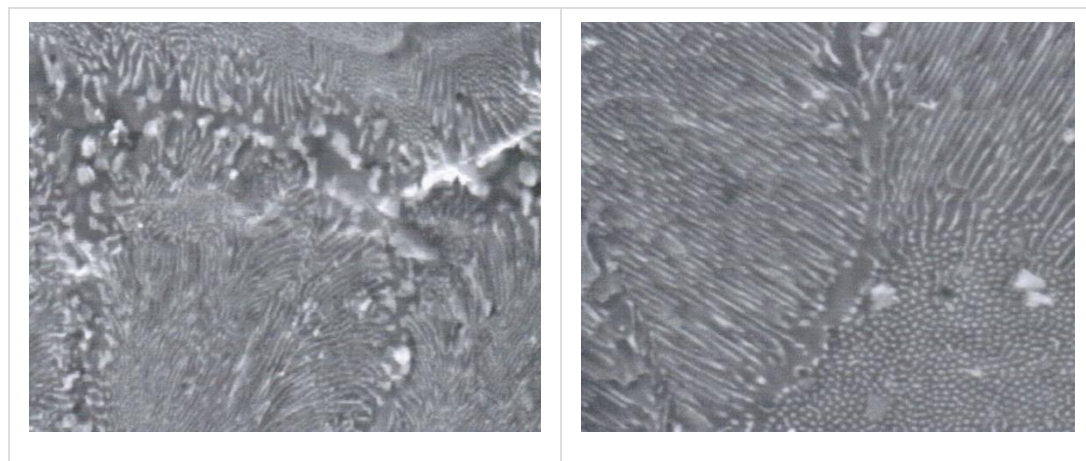
特性 Characteristics

Structure 结构	Abosolute D ensity 真比重	Knoop Hardn ess 努谱硬度	Melting point 熔点	Color 颜色
a- Al ₂ O ₃ , m. t – ZrO ₂	4.65 g/cm ³	1620 kg/mm ²	1880°C	Grey

化学成分典型值 Chemical Analysis (typical)

Al ₂ O ₃	ZrO ₂	SiO ₂	Fe ₂ O ₃	TiO ₂	Na ₂ O
59%	40%	0.10%	0.20%	0.15%	0.08%

晶体显微结构 Microstructure 晶体尺寸 12 微米



产量 Capacity: 200MT/month (F 砂及 P 砂合计)

锆刚玉应用领域 Applications

AZ40 F-grade 锆 40F 砂	AZ40 P-grade 锆 40P 砂
Bonded Abrasives 固结磨具	Coated Abrasives 涂附磨具

Cutting stainless steel 切割不锈钢 Cutting high alloys steel types 切割高合金钢 high pressure rough grinding and snagging 重负荷粗磨及荒磨 snagging of alloyed steel castings 合金钢铸件荒磨 Large diameter cut off wheels 大直径切割砂轮 Steel Conditioning 钢坯修磨 ID & OD Grinding Centerless Grinding Disc Grinding Segments Track Grinding	Sanding of stainless steel types(e.g. Cr-Ni steel) Machining of high alloyed steel types under heavy duty conditions Sanding of parquet floors Belts 砂带 Flap disc 砂布轮 Vulcanized fiber discs 钢纸磨片
---	---

AZ40-F grade products are specifically engineered for bonded abrasives. From rough, organic-bonded abrasives to precise, vitrified-bonded abrasives, JYS offers a wide range of products that can be customize to suit various needs. AZ40-F Grade products vow to increase material removal rates and to extend usability without sacrificing beautiful finishes. 锆 40F 砂国内主要用于钢轨修磨砂轮及切割片。

AZ40-F 堆积密度 bulk density(g/cm3)

F12	F14	F16	F20	F24
2.22-2.36	2.20-2.34	2.15-2.29	2.12-2.26	2.10-2.24
F30	F36	F40	F60	F80
2.05-2.09	2.00-2.14	1.96-2.10	1.91-2.05	1.89-2.03
F100	F120	F150	F180	F220
1.88-2.02	1.88-2.02	1.88-2.02	1.88-2.02	1.88-2.02

AZ40-F 粒度组成 grain sizes of AZ40-F

粒度 Grain	Sieve1 Oversize		Sieve2 Coarse Grit		Sieve3 1stNominal		Sieve3+Sieve4 2ndNominal		Sieve5 -Pan	
	Mesh	%	Mesh	%	Mesh	%	Mesh	%	Mesh	%
F8	+5	0	+7	0-20	+8	45+	+8+10	70+	-12	0-3
F10	+6	0	+8	0-20	+10	45+	+10+12	70+	-14	0-3
F12	+7	0	+10	0-20	+12	45+	+12+14	70+	-16	0-3
F14	+8	0	+12	10-35	+14	30-60	+14+16	55+	-18	0-3

F16	+10	0	+14	1-20	+16	25-55	+16+18	55+	-20	0-6
F20	+12	0	+16	0-20	+18	20-50	+18+20	60+	-25	0-10
F24	+16	0	+20	15-40	+25	35-65	+25+30	55+	-35	0-3
F30	+18	0	+25	10-35	+30	40+	+30+35	55+	-40	0-3
F36	+20	0	+30	0-25	+35	45+	+35+40	65+	-45	0-3
F46	+30	0	+40	0-30	+45	40+	+45+50	65+	-60	0-3
F54	+35	0	+45	0-30	+50	40+	+50+60	65+	-70	0-3
F60	+40	0	+50	0-30	+60	40+	+60+70	65+	-80	0-3
F70	+45	0	+60	0-25	+70	40+	+70+80	65+	-100	0-3
F80	+50	0	+70	0-25	+80	40+	+80+100	65+	-120	0-3
F90	+60	0	+80	0-20	+100	40+	+100+120	65+	-140	0-3
F100	+70	0	+100	0-20	+120	40+	+120+140	65+	-200	0-3
F120	+80	0	+120	0-20	+140	40+	+140+170	65+	-230	0-3
F150	+100	0	+140	0-15	+170+200	40+	+170+200+230	65+	-325	0-3
F180	+120	0	+170	0-15	+200+230	40+	+200+230+270	65+	-	-
F220	+140	0	+200	0-15	+230+270	40+	+200+270+325	65+	-	-
F240	+170	0	+200	0-5	+230+270	8+	+230+270+325	38+	-	-

AZ40-P grade products are specifically engineered for coated abrasives. While traditional abrasives dull or break at the bonding point, JYS's AZ40-P Grade abrasives have unique fracture properties that offer microscopic precision in performance and efficient ability in high speed cutting action. These grains do not only improve the overall cutting experience, but they also extend the usability of your sandpapers, belts, or flap discs. 锆 40P 砂主要用于砂带和砂纸。

AZ40-P 堆积密度 bulk density(g/cm3)

P20	P24	P30	P36	P40
0-2.25	0-2.20	0-2.20	0-2.20	0-2.10
P50	P60	P80	P100	P120
0-2.10	0-2.00	0-2.00	0-1.93	0-1.93
P150	P180	P220		
0-1.93	0-1.93	0-1.93		

AZ40-P 粒度组成 grain sizes of AZ40-P

粒度	Oversize		Coarse Grit		1stNominal		2ndNominal		Fines		Pan
Grain	Sieve 1		Sieve 2		Sieve 2+3		Sieve 2+3+4		Sieve 2+3+4+5		-5
Size	Mesh	%	Mesh	%	Mesh	%	Mesh	%	Mesh	%	%
P20	+12	0	+16	0-7	+16+18	34-50	+16+18+20	80-92	+16+18+20+25	96+	0-4

P24	+14	0	+18	0-1	+18+20	10-18	+18+20+25	52-70	+18+20+25+30	92+	0-8
P30	+16	0	+20	0-1	+20+25	10-18	+20+25+30	52-70	+20+25+30+35	92+	0-8
P36	+18	0	+25	0-5	+25+30	14-28	+25+30+35	58-76	+25+30+35+40	90+	0-10
P40	+25	0	+35	4-15	+35+40	48-73	+35+40+45	85-97	+35+40+45+50	95+	0-5
P50	+30	0	+40	3-10	+40+45	36-52	+40+45+50	80-92	+40+45+50+60	94+	0-6
P60	+35	0	+45	0-7	+45+50	15-35	+45+50+60	56-74	+45+50+60+70	92+	0-8
P80	+45	0	+60	0-7	+60+70	15-35	+60+70+80	56-74	+60+70+80+100	92+	0-8
P100	+50	0	+70	0-1	+70+80	10-18	+70+80+100	52-70	+70+80+100+120	92+	0-8
P120	+70	0	+100	0-7	+100+120	34-50	+100+120+140	80-92	+100+120+140+170	96+	0-4
P150	+80	0	+120	0-3	+120+140	20-32	+120+140+170	66-84	+120+140+170+200	96+	0-4
P180	+100	0	+140	0-2	+140+170	10-20	+140+170+200	50-74	+140+170+200+230	90+	0-10
P220	+120	0	+170	0-2	+170+200	10-20	+170+200+230	50-74	+170+200+230+270	90+	0-10

Updated: Jan 01,2018

漳州锦源盛锆业有限公司 JYS-Zhangzhou Jinyuansheng Zr Industry Co.,Ltd.

联系人 Contact person : 吴湖南 Mr Hunan Wu (deputy general manager)

手机/微信 mobile : 13606904455

Email: wuhunan#topzr.cn 把#换成@

Web: www.china-wu.com